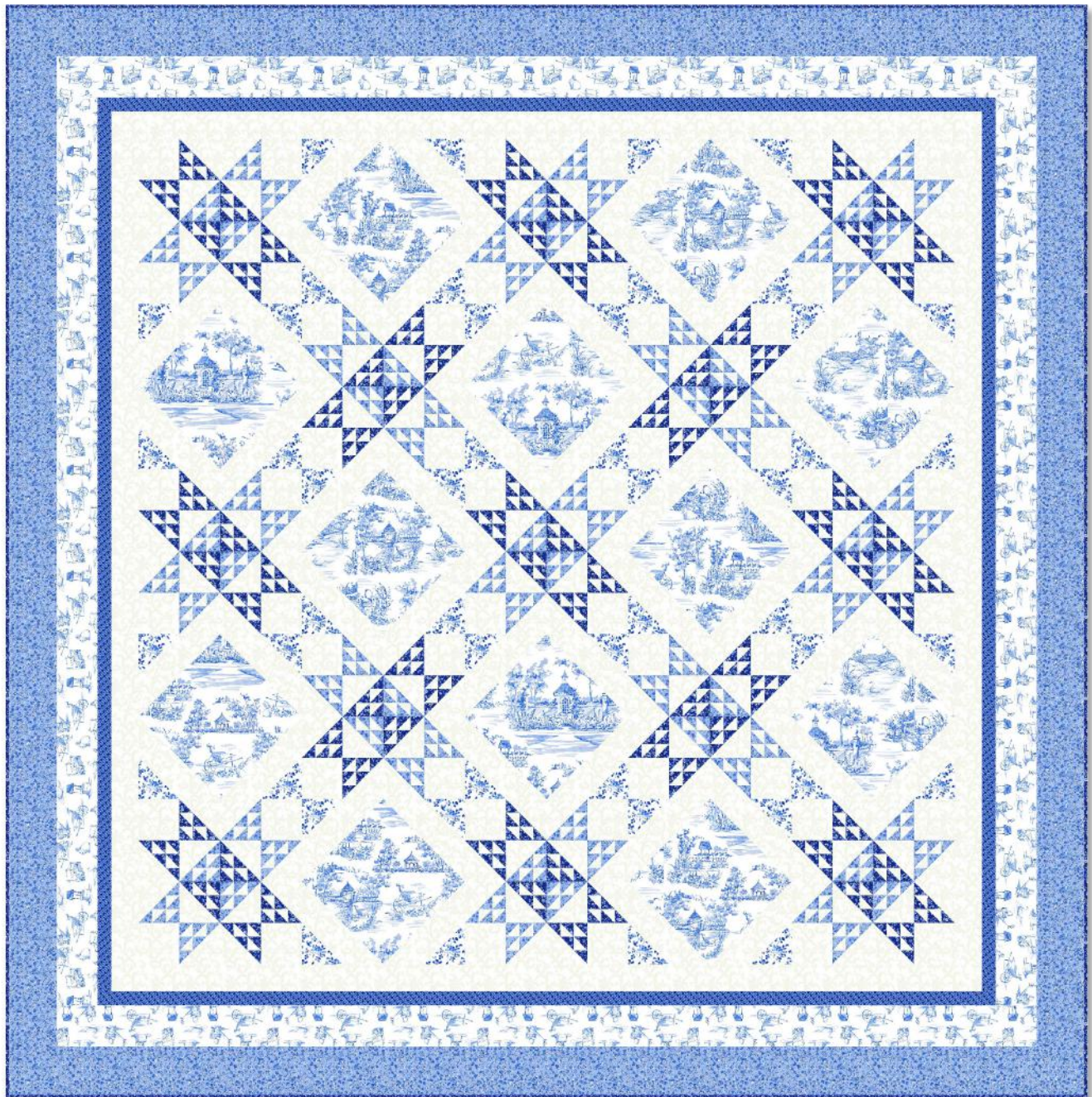


A View From The Window

Designed by Wendy Sheppard

Featuring Williamsburg's Annabelle Collection

SIZE: 79" x 79"

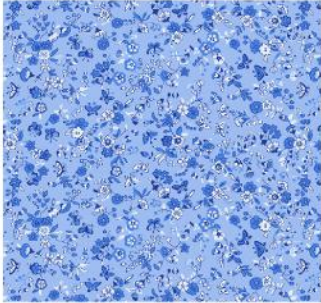


PLEASE NOTE: QUILT IMAGE SHOWN IS A DIGITAL REPRESENTATION, FABRIC LOOK MAY VARY ON YOUR PROJECT.
VISIT OUR *FREE PROJECT* SECTION ONLINE FOR ANY PATTERN UPDATES BEFORE STARTING QUILT PROJECT.

WINDHAM *W* **FABRICS**

A View From The Window

Page 2



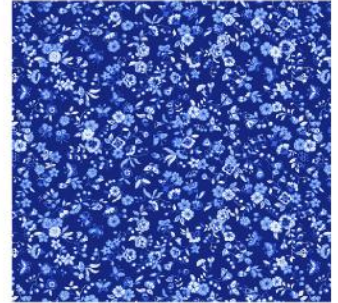
41576-3 Light Blue



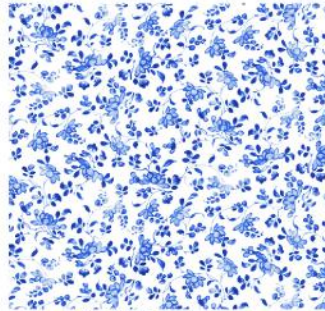
41572-X Multi



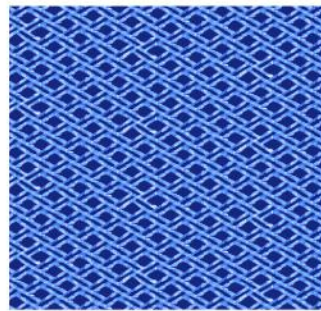
41573-X Multi



41576-1 Blue



41574-2 White



41577-1 Blue

4 1/8 yards of Fabric 1: white solid
1 3/4 yards of Fabric 2: 41576-3 Light Blue
1 1/2 yards of Fabric 3: 41572-X Multi
3/4 yards of Fabric 4: 41573-X Multi
1 1/4 yards of Fabric 5: 41576-1 Blue
1/2 yard of Fabric 6: 41574-2 White
3/8 yard of Fabric 7: 41577-1 Blue
4 7/8 yards of backing fabric
85" square of batting
Basic sewing supplies

A View From The Window

Page 3

Cutting Instructions:

From Fabric 1:

8 (6 1/2" x 42") strips. Subcut 48 (6 1/2") squares

8 (3 7/8" x 42") strips. Subcut 78 (3 7/8") squares and then cut squares diagonally once to yield 156 A triangles

5 (3 1/2" x 42") strips. Subcut 52 (3 1/2") squares

7 (2 1/2" x 42") strips. Piece strips and subcut 2 (2 1/2" x 60 1/2") and 2 (2 1/2" x 64 1/2") strips for inner border

12 (2" x 42") strips. Subcut 234 (2") squares

From Fabric 2:

8 (4" x 42") strips. Piece strips and subcut 2 (4" x 72 1/2") and 2 (4" x 79 1/2") strips for outer border

6 (2" x 42") strips. Subcut 117 (2") squares

6 (1 7/8" x 42") strips. Subcut 117 (1 7/8") squares and then cut squares diagonally once to yield 234 B triangles

From Fabric 3:

4 (12 1/2" x 42") strips. Subcut 12 (12 1/2") squares

From Fabric 4:

8 (3 1/2" x 42") strips. Piece strips and subcut 2 (3 1/2" x 66 1/2") and 2 (3 1/2" x 72 1/2") strips for third border

From Fabric 5:

6 (2" x 42") strips. Subcut 117 (2") squares

6 (1 7/8" x 42") strips. Subcut 117 (1 7/8") squares and then cut squares diagonally once to yield 234 B triangles

From Fabric 6:

4 (3 1/2" x 42") strips. Subcut 48 (3 1/2") squares

From Fabric 7:

7 (1 1/2" x 42") strips. Piece strips and subcut 2 (1 1/2" x 64 1/2") and 2 (1 1/2" x 66 1/2") strips for second border



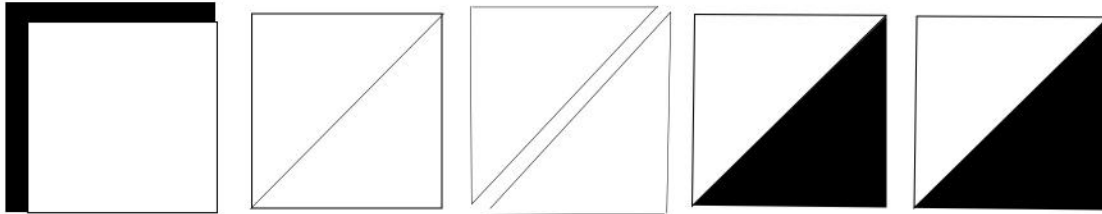
A View From The Window

Page 4

Star Block Assembly:

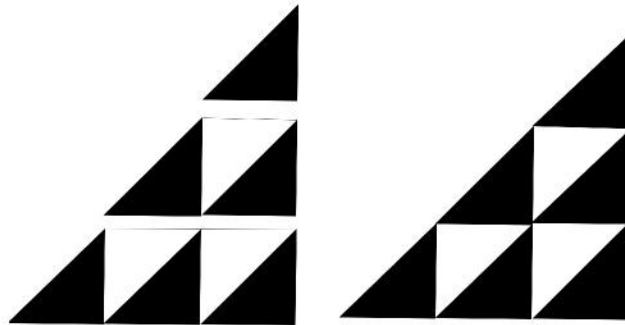
1. Constructing triangular HST units (using Fabric 2 unit as example).

Draw a diagonal line on the wrong side of 1 (2") Fabric 2 square. Place square, right sides together, on 1 (2") Fabric 1 square. Sew 1/4" away on the right and left sides of drawn line. Cut along drawn line to yield 2 HST units. Open and press. Square up HST units to measure 1 1/2" square.



Repeat to make a total of 18 Fabric 2 HST units.

2. Arrange 3 HST units and 3 Fabric 2 B triangles into 3 rows as shown. Sew the units and triangles into rows and join the rows together to make a pieced triangle. Layer a Fabric 1 A triangle right sides together on a pieced triangle and sew along the long edge. Press open and trim to 3 1/2" square.

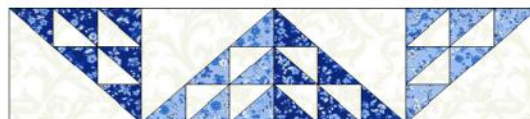


3. Make a total of 6 Fabric 2 pieced HST units and 6 Fabric 5 pieced HST units.

4. Lay out and sew 2 (3 1/2") Fabric 1 squares, 1 Fabric 2 pieced HST unit and 1 Fabric 5 pieced HST unit into a row as shown. Repeat to make a second row.



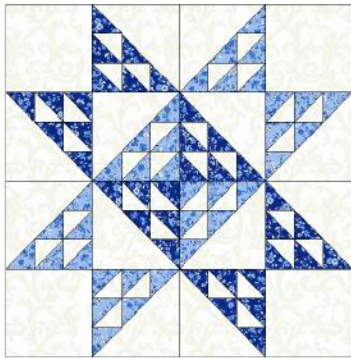
5. Lay out and sew 2 Fabric 2 pieced HST units and 2 Fabric 5 pieced HST units into a row as shown. Repeat to make a second row.



A View From The Window

Page 5

6. Sew the rows together as shown to complete a block. Block should measure 12 1/2" square. Repeat to make a total of 13 blocks.



Sq to 12 1/2"
(NOTE ROTATION)

Diamond-in-Square (DIS) Block Assembly:

(replace existing step 1 text with this)

1. Draw a diagonal line on the wrong side of 1 (6 1/2") Fabric 1 square. Place square, right sides together, at a corner of 1 (12 1/2") Fabric 3 square. Sew on drawn line. Trim 1/4" away from sewn line. Open and press to reveal white corner triangle.

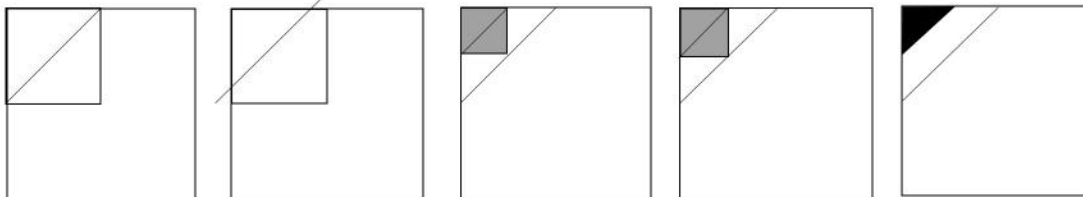
Draw a diagonal line on the wrong side of 1(3 1/2") Fabric 6 square. Place square, right sides together, at the same corner where the Fabric 1 triangle is. Sew on drawn line. Trim 1/4" away from sewn line. Open and press to reveal Fabric 6 corner triangle.

Repeat on the remaining corners of the same Fabric 3 square to complete 1 DIS block, as shown. Block should measure 12 1/2" square.



Sq to 12 1/2"

2. Repeat to make a total of 12 blocks.



A View From The Window

Page 6

Quilt Assembly:

1. Arrange and sew 3 star blocks and 3 DIS blocks into a row as shown. Make 3 rows.



2. Arrange and sew 3 DIS blocks and 2 star blocks into a row as shown. Make 2 rows.



3. Sew rows together as shown to complete the quilt center.



4. Inner border: Sew 2 (2 1/2" x 60 1/2") Fabric 1 strips to the opposite sides of quilt center. Sew 2 (2 1/2" x 64 1/2") Fabric 1 strips to the top and bottom of quilt center.
5. Second border: Sew 2 (1 1/2" x 64 1/2") Fabric 7 strips to the opposite sides of quilt center. Sew 2 (1 1/2" x 66 1/2") Fabric 7 strips to the top and bottom of quilt center.
6. Third border: Sew 2 (3 1/2" x 66 1/2") Fabric 4 strips to the opposite sides of quilt center. Sew 2 (3 1/2" x 72 1/2") Fabric 4 strips to the top and bottom of quilt center.
7. Outer border: Sew 2 (4" x 72 1/2") Fabric 2 strips to the opposite sides of quilt center. Sew 2 (4" x 79 1/2") Fabric 2 strips to the top and bottom of quilt center to complete quilt top.
8. With the backing fabric laying taut, place batting and then quilt top to form quilt sandwich. Baste sandwich. Quilt as desired. Use the 8 (2 1/4" x 42") Fabric 5 strips to bind the quilt.